

Long Term Care Services and Supports

May 24, 2017

Long Term Services and Supports (LTSS) Reorganization

- The purpose of the LTSS reorganization was to create a more integrated Person Centered approach to long term services and supports delivery in SD.
- Previously, people with physical or other disabilities who needed state assistance with long term services received them from the Department of Human Services. People with aging related disabilities received assistance from the Department of Social Services.
- Combining these services in one Department will help ensure that people can best access long term services in their homes and communities, regardless of why they need the services or what type of disability they have.
- The change will help us align services available for individuals, and continue to develop person centered community based services for people in our state.



The Learning Community for Person Centered Practices envisions a world where all people have positive control over the lives they have chosen for themselves. Our efforts focus on people who have lost or may lose positive control because of society's response to the presence of a disability. We foster a global learning community that shares knowledge for that purpose. All are welcome to share and learn.

South Dakota's Person Centered Journey

Other past PCT Trainings:

- o Positive and productive meetings
- o People Planning Ahead
- o Plan Facilitation
- o Community Connecting

Future's so
bright...

SDPC and DOE Efforts:

PCT Initiative for Educators – 2 day PCT training and 3 days of follow up during 1st year.

Person Centered Organizations (PCO)

- ❖ Began in January 2007
- ❖ 2 Day PCT trainings
- ❖ Development of Coaches & Leaders
- ❖ 16 of 19 CSPs & SDDC completed the PCO structure
- ❖ Developed 18 PCT trainers, with 2 PCT trainers becoming Mentor trainers

People Planning Together (PPT)

- ❖ Began in August 2010
- ❖ A Self-advocate led training to teach others how to write and implement their own person centered plan.
- ❖ 7 trainers

Families Planning Together (FPT)

- ❖ Began in April 2011
- ❖ Family led trainings to teach other families about PCT tools and develop a 1 page introduction for their loved one.
- ❖ 6 FPT Facilitators

Living with Family – Life in the Balance

- ❖ Began in March 2012
- ❖ 1 day workshop for paid supporters to understand how to support people living at

Family Support 360

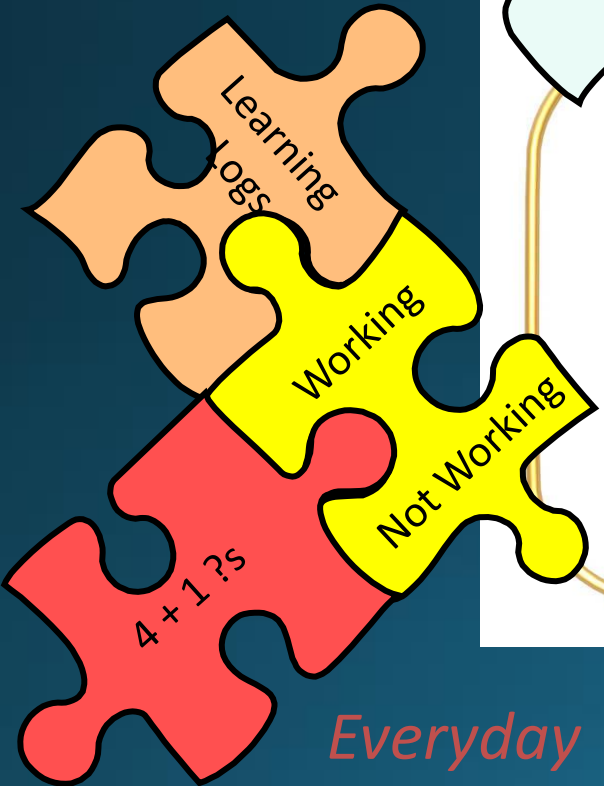
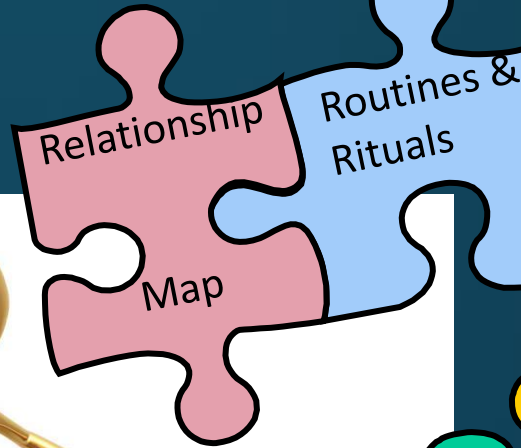
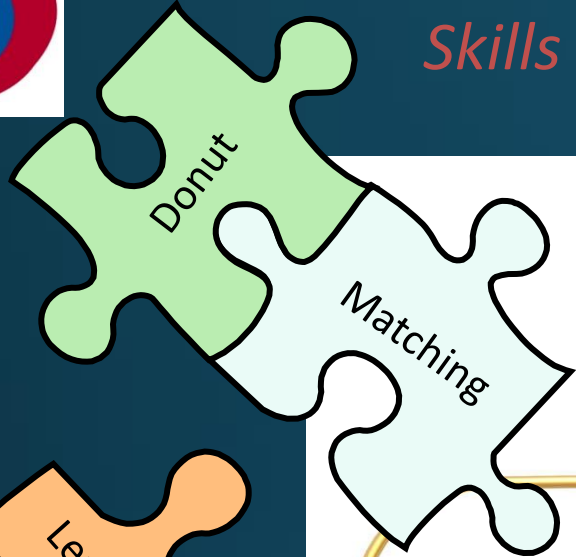
- ❖ Kick off Sept. 2012
- ❖ Focus on developing and maintaining family centered supports using PCT in Family Support 360 processes.

Department and VR become Person Centered Org. -2014

- ❖ Began 2014
- ❖ Process Mapping
- ❖ Action Planning/Strategic Planning
- ❖ Successful Change Efforts
- ❖ PC Supervision



Management Skills

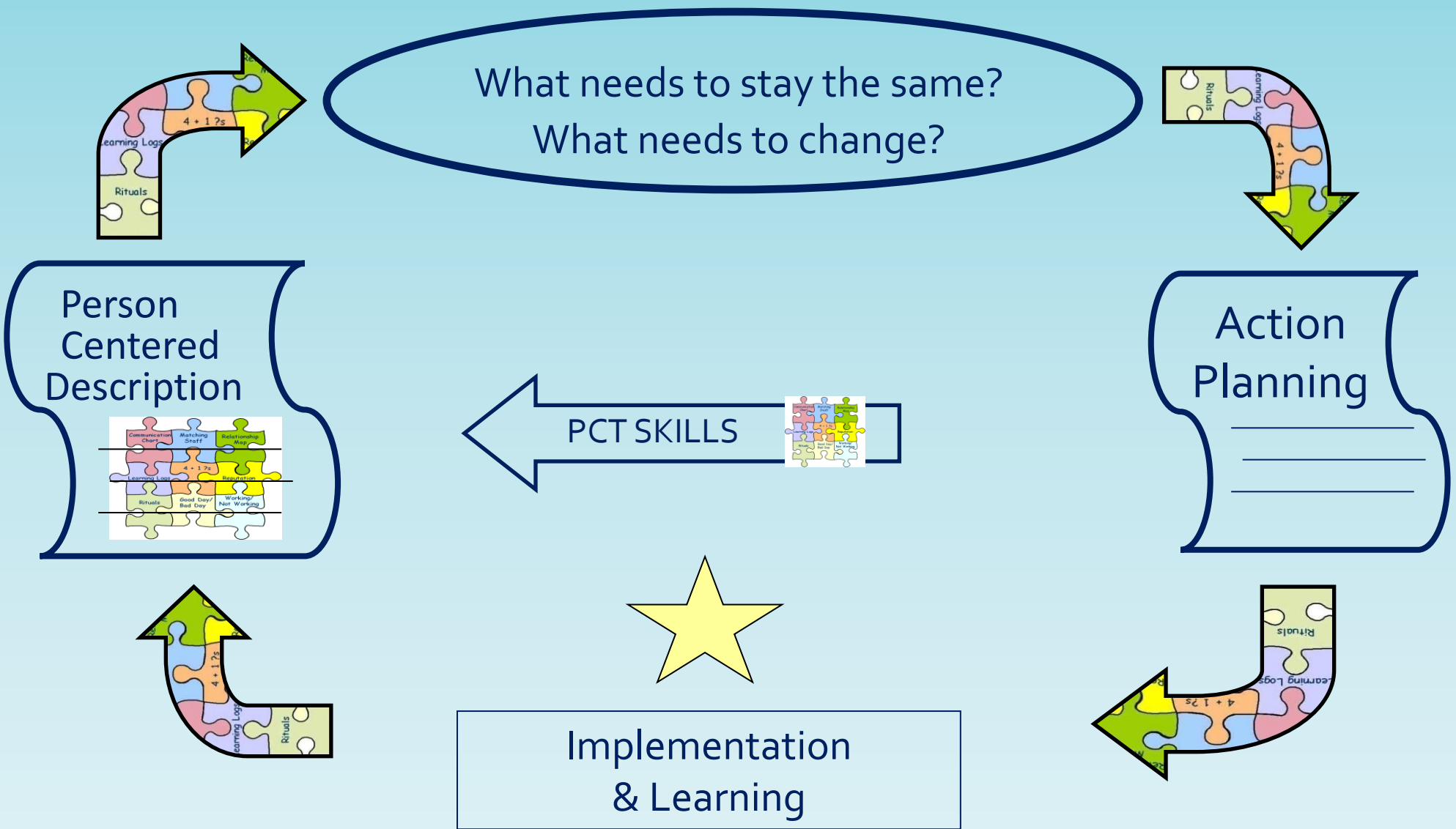


Important To
Important For &
The Balance
Between

*Discovery/
Listening Skills*

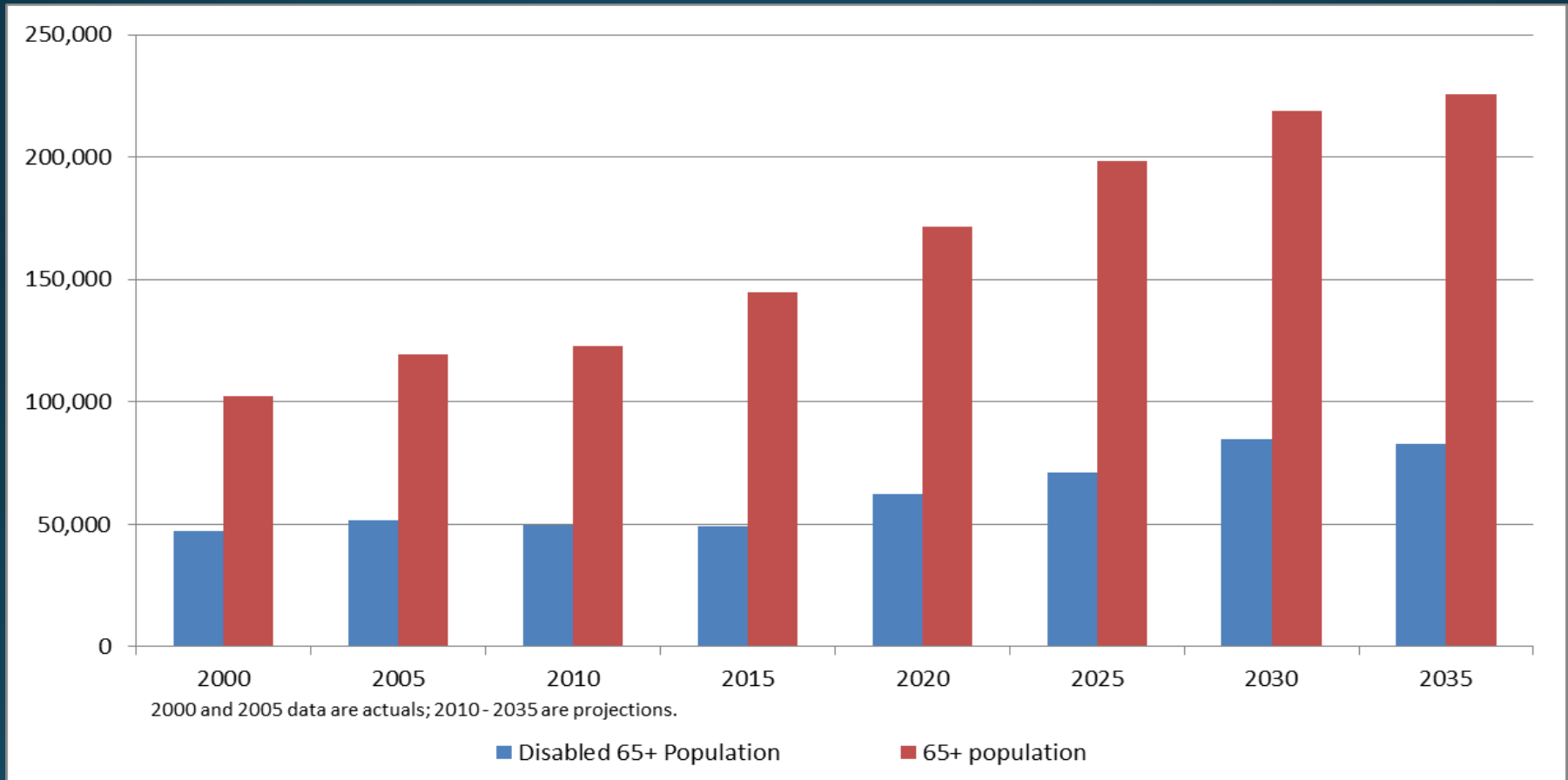
*Everyday
Learning Skills*

Learning Wheel



Projected Demand for LTSS

Projections of SD Elderly and Disabled Population



Source: Abt Associates' analysis of South Dakota Data Center's Population Projections data, 2010 and American Community Survey.

Snapshot: Medicaid-funded Long-Term Services and Supports (LTSS)

	Nursing Homes/Institutions			Home & Community-Based Svc		
	South Dakota	South Dakotans Served	National	South Dakota	South Dakotans Served	National
Older Adults, People with Physical Disabilities	\$130M (82%)	3436 (65%)	\$55.1B (59%)	\$27.M (18%)	1827 (35%)	\$37.9B (41%)
People with Developmental Disabilities	\$30.9M (22%)	264 (6%)	\$10.4B (25%)	\$108.2M (78%)	3883 (94%)	\$31.4B (75%)

Vision for South Dakota LTSS

“Maximize the health, well-being and quality of life of South Dakotans who need long term services and supports through a person-centered system that encourages choice and independence, supports people to stay in their homes and local communities, and provides an array of culturally-competent services appropriate to their needs and preferences, regardless of age or disability.”

Key Opportunities for LTSS Improvements in South Dakota

- Expand access to home and community-based services
- Transition current residents interested in moving out of facilities
- Improve diversion efforts in order to reduce new long-term resident admissions to facilities
- Improve case management for all waiver recipients
- Expand access to self-directed services
- Improve supports to family caregivers
- Develop new, small family-style home-based residential model
- Increase public awareness through focused campaign

Prior Efforts to Meet LTSS Demand

- Develop a Single Point of Entry system for long-term care services:
 - Aging and Disability Resource Center (ADRC) model implemented
- Expand and enhance existing home and community-based services:
- Implement an access critical nursing facility
- Right-size the nursing facility industry by realigning moratorium beds
- Expand nursing facilities through a Request for Proposals (RFP) process
- Maintain a sustainable financial infrastructure
- Analyze the need for additional assisted living settings

Recent Efforts

Home and Community-Based Services (HCBS)

- Expand HCBS access and options: Waiver changes
- Increase self-direction opportunities: agency with choice
- Establish waiver-funded independent case management, with a stronger focus on person-centered approaches
- Improve supports to family caregivers
- Campaign to increase public awareness of ADRC, HCBS options in local communities

Improving Diversion Efforts

- Improve discharge planning and coordination
- Using data and analytics to better inform decisions
- Strengthen pre-admission screening processes
- Collaboration with transition efforts

Transition of Current Nursing Facility Residents

- Initial focus: under-55 population interested in return to community
- MFP referrals and transitions
- Improvements in MDS Section Q training, implementation, data collection, referrals
- Using data to help identify individuals most likely to succeed
- Determined the need for waiver-funded transition services: requires waiver amendment

Development of New Residential Options

- **Community Living Homes (DOH license)**

“Any family-style residence whose owner or operator is engaged in the business of providing individualized and independent residential community living supports for compensation to at least one unrelated adult, but no more than four adults, and provides one or more regularly scheduled health related services, either administered directly or in collaboration with an outside health care provider. This term does not include any setting which is certified or accredited through chapter 34-20A, title 27A, or title 27B.”

- **Supported Family Caregiver Homes**

- Reviewing models and options from other states
- Use of stipends to support families

Thank you